

POLK COUNTY CORNER RESTORATION FORM

SECTION 6 TOWNSHIP 6 S RANGE 8 W W.M. BLM ID 100600

CORNER CORNER COMMON TO SECTION 6 AND SECTION 7 ON RANGE LINE

DATE 7/30/2025 CORNER RESTORATION FIELD BOOK 202-09 PAGE 3

PREVIOUS RENEWALS / SURVEYS, ETC.

GLO R46-21 (ARMSTRONG, 1855); GLO R330-245 (FENTON, 1887); GLO R334-296 (MALONEY, 1889); TILLAMOOK Co. B-701 / YAMHILL COUNTY CSP6237; TILLAMOOK Co. BK3-164; POLK Co. CSI396; POLK Co. RED-66 / TILLAMOOK Co. RW-952; POLK Co. REG-48 / TILLAMOOK Co. BK6-295; POLK Co. CSI1246 / TILLAMOOK Co. B-534; TILLAMOOK Co. A-4807; POLK Co. CSI1815 / TILLAMOOK Co. B-1230; POLK Co. CSI2615;

CONDITION REPORT
 RENEWED
 UNRECORDED
 SURVEYED IN

MONUMENT AND ACCESSORIES FOUND (CONDITION AND SOURCE)

I FOUND A 2"x30" RUSTY GALVANIZED IRON PIPE WITH A PLARED BASE AND 2 1/2" BRASS CAP, SET IN YAMHILL Co. CSP6237 / TILL. Co. B-701. THE MONUMENT WAS FOUND UP 6" AND LEANING WESTERLY, HAVING BEEN PUSHED OVER BY A LARGE FIR ROOT. A RUSTY 1 1/4"x26" PIPE WAS BURIED ALONGSIDE THE MONUMENT PER TILLAMOOK Co. B-701 / YAMHILL Co. CSP6237 (ORIGIN UNKNOWN, FIRST REFERENCED IN POLK Co. CSI1246 / TILLAMOOK Co. B-534 IN 1967). AN ORANGE CARSONITE POST WAS FOUND N'LY 2.4'. THE CORNER FALLS ON NEARLY FLAT GROUND IN YOUNG TIMBER. A GRAVEL ROAD COURSE N55°W BEARS S35°W 110'.

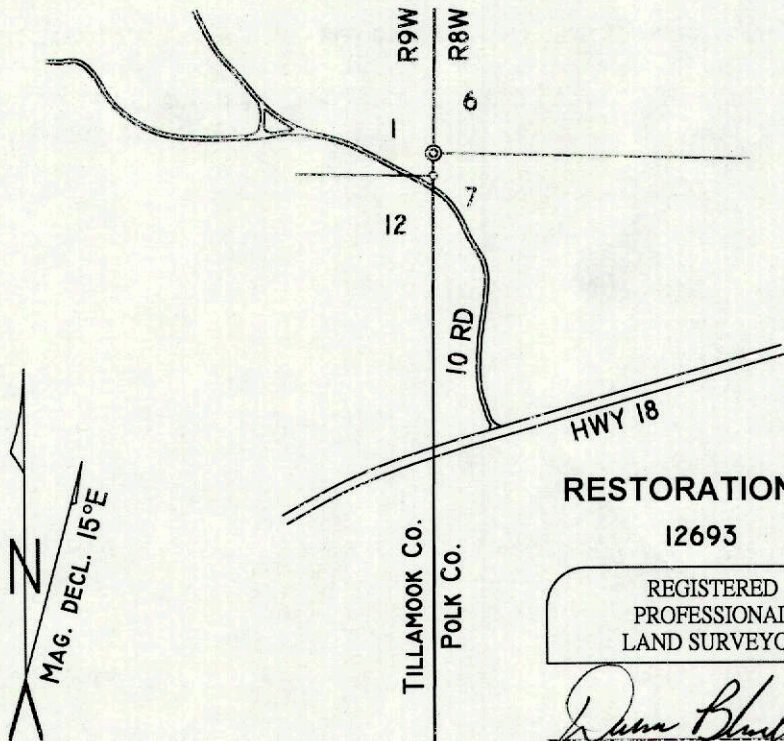
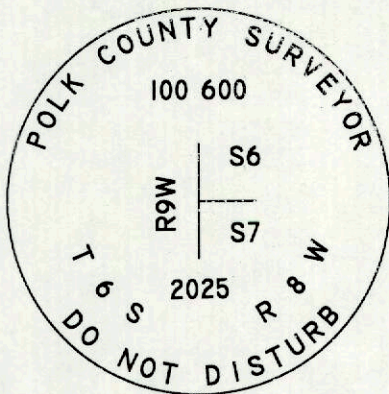
THE FOLLOWING ACCESSORIES WERE MEASURED FROM THE BASE OF THE MONUMENT. BASIS OF BEARINGS FOR MEASURED ACCESSORIES IS OCRS SALEM ZONE GRID. GRID CONVERGENCE ANGLE IS -00°27'14".

- 3' ROTTEN FIR DUFF PILE (24") BEARS N26°00'E (N28°E) 43.2' CENTER (65LK/42.9'). (GLO 1855)
- 30" (15") ROTTEN FIR STUMP BEARS N77° 08'E (N77°45'E) 125.2' TO CENTER (190LK/125.4'). EVIDENCE OF AXEWORK AND REGROWTH, TAG LOOSE ON GROUND. NO SCRIBING VISIBLE. (GLO 1887)
- ROTTED FIR STUB (24") BEARS S22°33'E (S29°E) 10.2' TO CENTER (14LK/9.2'). (GLO 1855)
- 36" (22") ROTTEN FIR STUMP BEARS S15°42'E (S16°30'E) 67.4' TO CENTER (103LK/68.0'). OPENED AND FOUND SCRIBING "BT" ON A LOWER FACE, ILLEGIBLE SCRIBING ABOVE. (GLO 1887)
- 27" (14") HI-STUMP DOUG.-FIR BEARS N22°01'E (N22°E) 22.6' (22.5'). HEALED FACE, USFS SIGN, TIN TOP. (HOLLINGSWORTH, 1967; POLK Co. CSI1246 / TILL. Co. B534; BK3-164 TILL. Co.)
- 27" (22") HI-STUMP DOUG.-FIR BEARS S17°19'E (S18°E) 14.0' (13.6'). HEALED FACE, TAG, TIN TOP. (HOLLINGSWORTH, 1967; POLK Co. CSI1246 / TILL. Co. B534; TILL. Co. BK3-164)

MONUMENT SET (PROCEDURES AND DESCRIPTION)

I REMOVED A PORTION OF THE NOW DEAD FIR ROOT AND ROTATED THE MONUMENT BACK TO A PLUMB POSITION OVER ITS BASE. I REFERENCED AND REMOVED IT AND IN ITS PLACE SET A 2 1/2"x30" ALUMINUM POST WITH A 3 1/2" ALUMINUM CAP AND A PINK PLASTIC MAGNETIC BASE. UP 6".

MONUMENT DETAIL



FIRM / AGENCY

POLK COUNTY SURVEYORS OFFICE
820 SW ASH ST.
DALLAS, OREGON 97338
(503) 623-9287

WITNESSES JOSH HERZBERG

TONY MODE

RESTORATION NO.
12693

REGISTERED
PROFESSIONAL
LAND SURVEYOR

Darren Blackwell
OREGON
MARCH 3, 2022
DARREN BLACKWELL
97582

RENEWS 12/31/2025

NEW ACCESSORIES

- 13" DOUG.-FIR BEARS N83°13'E 14.89'. SCRIBED "T6SR8WS6BT".
- 11" DOUG.-FIR BEARS S33°09'E 17.14'. SCRIBED "T6SR8WS7BT".
- 5/8"x30" IRON ROD WITH YELLOW PLASTIC CAP MARKED "POLK COUNTY SURVEYOR" BEARS N68°10'21"W 27.68', DOWN 4".
- 1 RESET THE CARSONITE POST TO N 1'.

THE ORIGINAL CORNER COMMON TO SECTIONS 1 AND 12 BEARS S01°35'53"W (S00°18'17"W) 78.61' (78.59'). (TILL. Co. B-701)

COORDINATES

COORDINATES WERE OBTAINED BY TRAVERSING FROM TEMPORARY GNSS CONTROL. COORDINATES ARE PROJECTED TO THE OREGON COORDINATE REFERENCE SYSTEM SALEM ZONE, NAD83(2011) EPOCH 2010.00. UNITS IN INTERNATIONAL FEET.

N = 270472.09
E = -1577.60

NOTES

- 1 -SET WITNESS TAGS, PAINTED SCRIBED FACES RED, AND PAINTED RED BANDS ON ALL LIVE BEARING TREES, UNLESS NOTED.
- 2 -ALL DISTANCES TO NEW BEARING TREES ARE MEASURED TO A 60D MAG NAIL AND POLK Co. SURVEYOR BRASS WASHER, RIGHT SIDE AND CENTER UNLESS OTHERWISE NOTED.

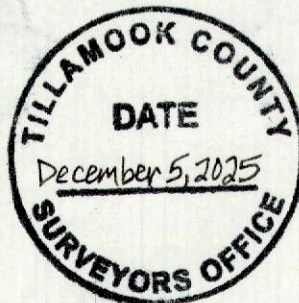
FIRM / AGENCY

POLK COUNTY SURVEYORS OFFICE
820 SW ASH ST.
DALLAS, OREGON 97338
(503) 623-9287

WITNESSES JOSH HERZBERG

TONY MODE

Page 2 of 2



RESTORATION NO.

12693

REGISTERED
PROFESSIONAL
LAND SURVEYOR

Darren Blackwell
OREGON
MARCH 6, 2022
DARREN BLACKWELL
97682

RENEWS 12/31/2025